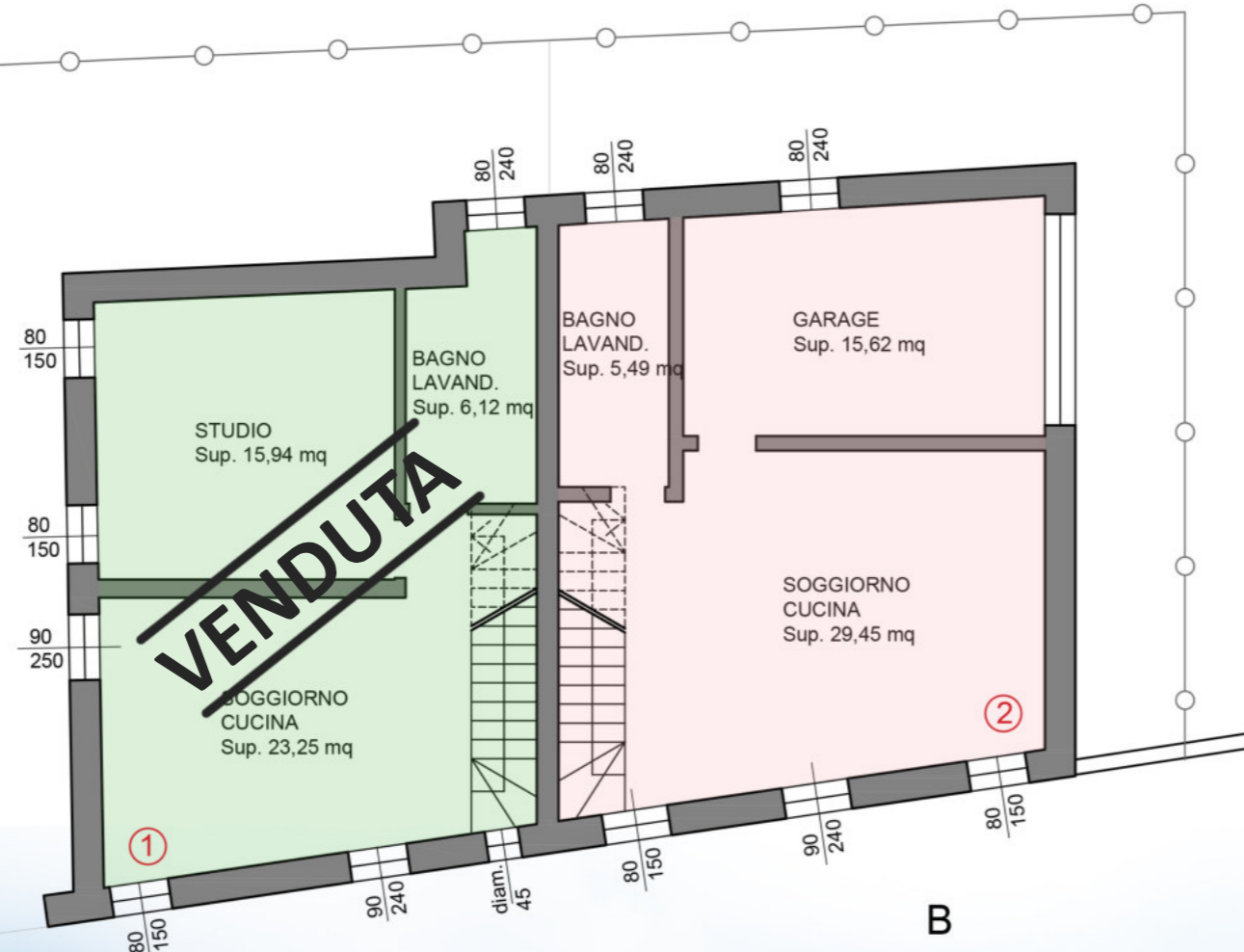
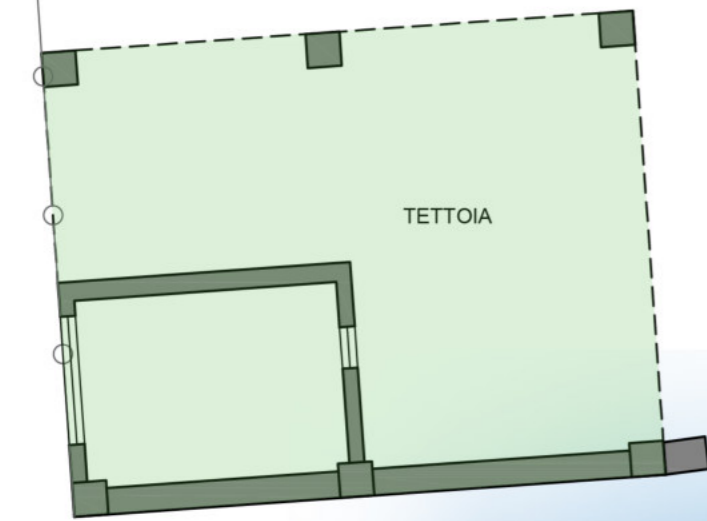


Pianta Piano Terra

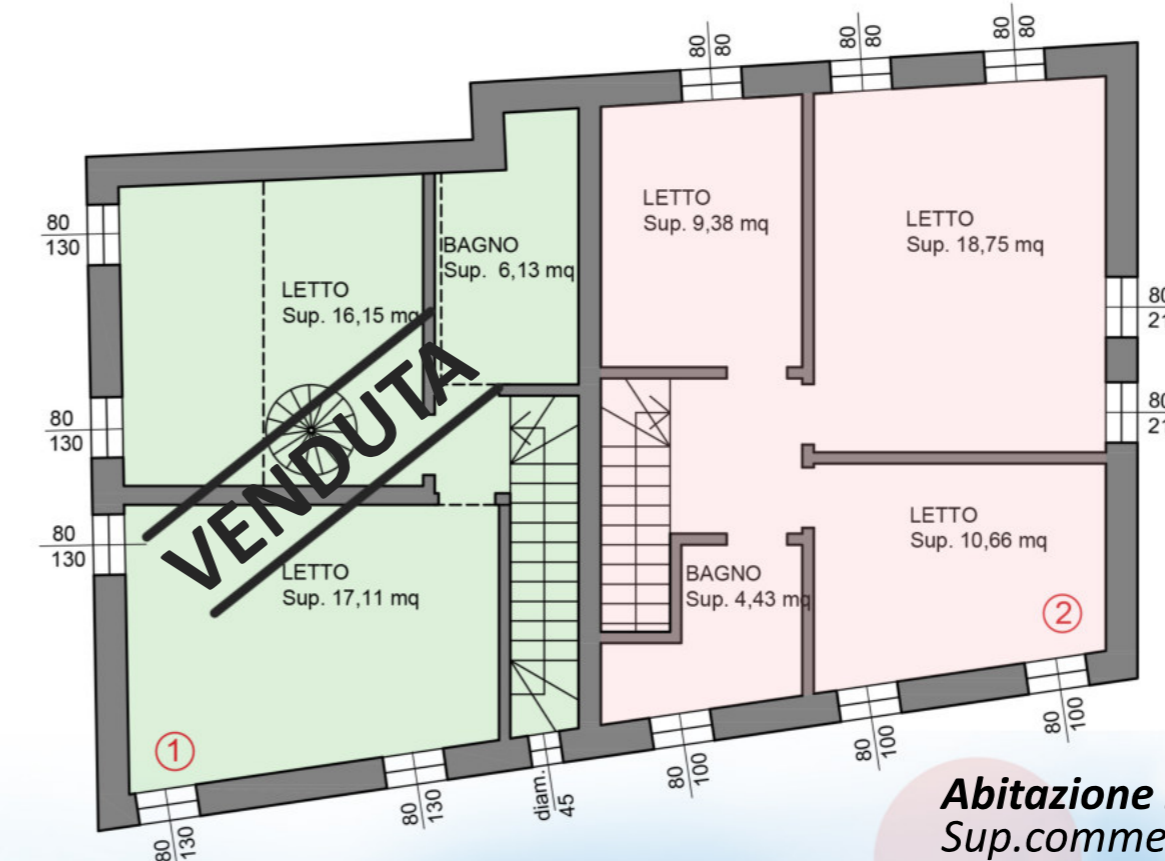
Progettazione:



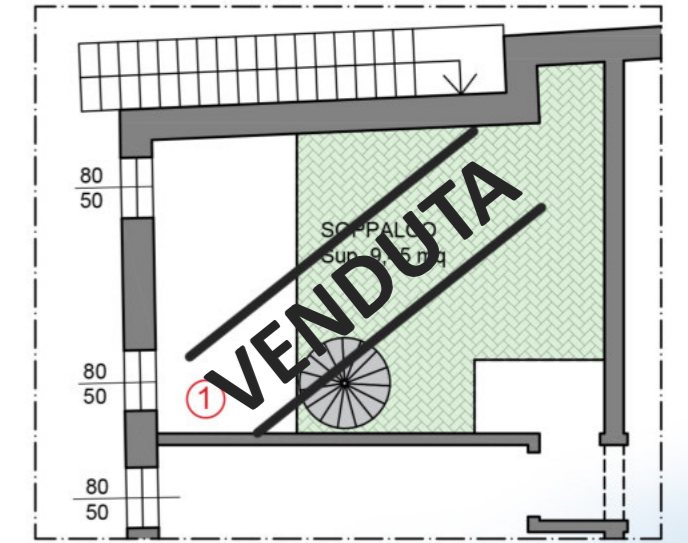
www.studiotecnico-elisaandreasii.it



Pianta Piano Primo



Pianta Soppalco



Abitazione 1 - piani terra / primo / soppalco
 Sup.commerciale mq 120,23
 Sup. utile mq 95,44
 Sup. tettoia mq 48,20

Abitazione 2 - piani terra / primo
 Sup.commerciale mq 106,16
 Sup. utile mq 81,75
Garage
 Sup.commerciale mq 20,18
 Sup. utile mq 15,62

